



Product catalog

2024

Pichler Forsttechnik GmbH

Kliening 204

9462 Bad St. Leonhard

AUSTRIA



WWW.FORSTTECH.AT

Inhalt

Felling grab	3
PLA 200 The ultralight energy wood grabber made in Austria	3
PLA 260	3
PLA 350	3
Harvester heads	5
BJM 350 Stroke Harvester	5
ARBRO 400 Stroke Harvester	6
ARBRO 1000 Harvester	7
Harvester head accessories	8
Insert processors	9
SKOGSOLLE SO 40 Attachment unit	9
Rope crane systems	10
PKM 250 Thinning rope crane	11
PKM 350 Tilting mast	12
PKM 350/3 3 Rope tilting mast	13
Rope crane accessories	14
Cultivated mast MW6	14
Carrying winch 6000	14
Carrying winch 2500	14
Rope crane automation	15
Automation	15
Remote systeme	16
Extensions	16
Accessories	16
Auxiliary winch	17
PRW 300	17
Accessories - electronics - radio	18
Special structures	19
Crane tilt	19
Crane cabins	20

Felling grab

PLA 200 The ultralight energy wood grabber made in Austria



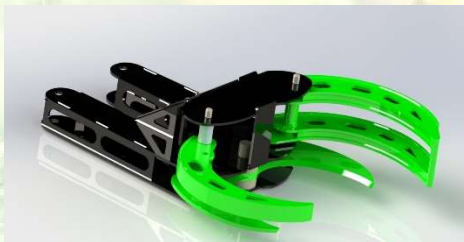
1.5-7.5ton



Technical data:

Weight: 104kg
Gripper opening: 620 mm
Operating pressure: 220 bar
Cutting capacity: 200 mm softwood, 150 mm hardwood
Carrier vehicle: from 1.5 ton

PLA 260



3.5-10ton



Technical data:

Weight: 150 kg
Gripper opening: 620 mm
Operating pressure: 220 bar
Cutting capacity: 260 mm softwood, 210 mm hardwood
Carrier vehicle: from 3,5 ton

PLA 350



7.5-20ton



Technical data:

Weight: 260 kg
Gripper opening: 620 mm
Operating pressure: 250 bar
Cutting capacity: 350 mm softwood, 280 mm hardwood
Carrier vehicle: from 7,5 ton

Felling grab accessories



changeover valve 12 / 24 V

Used when the carrier vehicle is only with is equipped with a control circuit. Switching takes place using a button or foot pedal in the cabin out of



Autocut-Funktion

The switchover between gripper and blades takes place automatically.



Mounting plates

All mounting plates are available for different manufacturers.



Mounting plates Lenhoff



Mounting plates Geel / Martin

Harvester heads

BJM 350 Stroke Harvester



technical Data:

Weight	280 kg
Oil requirements	60-100 l/min – min. 180 bar
saw sword	48 oder 54 cm
Max. felling diameter	50 cm
Limbing power	4,5 ton
Limbing diameter max.	380 mm
Thrust length	1000 mm
Power supply	12 V / 24 V

Measuring wheel measurement, diameter determination, 10 preselection lengths

Proportional machine control with a sophisticated control and measuring system.

Diameter-dependent knife pressure control with fully automatic operation

ARBRO 400 Stroke Harvester



technical Data:

Weight	330 kg
Oil requirements	45-80 l/min – 175 bar
saw sword	14“ oder 16“
Max. felling diameter	40 cm
Limbing power	2,3 ton
Limbing diameter max.	360 mm
Thrust length	600 mm
Power supply	12 V / 24 V

Measuring wheel measurement, diameter determination, simple installation possible on almost all carrier vehicles.

ARBRO 1000 Harvester



technical Data:

Weight	550 kg
Oil requirements	80-120 l/min – 180 bar
saw sword	20"
Max. felling diameter	50 cm
Limbing power	3,6 ton
Limbing diameter max.	450 mm
Thrust length	600 mm
Power supply	12 V / 24 V

Measuring wheel measurement, diameter determination, simple installation possible on almost all carrier vehicles

Harvester head accessories

Quick change mount



Extension by 70 cm

Recording Martin / Geel or Lenhoff

Bolt for rotator 25 - 40 mm

Walking foot



Extension by 70 cm

Total length 2350 mm

Recording Martin / Geel or Lenhoff

Bolt for rotator 25 - 40 mm

Clamping blades wear-resistant plastic

Integrated hose guide



Key extensions



Joysticks

Insert processors

SKOGSOLLE SO 40 Attachment unit



Weight	980 kg
Power requirement	Ab ca. 60 PS
saw sword	48 cm oder 54 cm
speed	2,8 m/Sek.
Limbing power	3,6 ton
Limbing diameter max.	400 / 500 mm möglich
Winch	Serie
Power supply	12 V / 24 V

Cultivation processor in different versions:

With and without a crane

Proportional knife control with 9 preselected lengths and diameter-dependent

Blade control

Radio controlled winch

Rope crane systems

Our cable crane systems are based on 25 years of experience with cable crane systems and now 15 years of our own developments

The simple construction and easy maintenance make the **PKM systems** perfect for:

Thinning tasks that require a quick change of location

Harvesting in the **assortment process**,

Or in **end use** thanks to the pulling force of up to 2.2 tons.

What all systems have in common is the **FULLY AUTOMATIC** control and radio operation.

Thanks to the sophisticated system, the speed is adjusted precisely to the required use via a **proportional system**.

Automatic saddle for three saddles, control of radio paths from all manufacturers as well as automatic gas adjustment for working and automatic gas round off the systems.

Rope ejection and rope inlet brake are standard equipment.

Climbing aids on the mast also serve as a rope and belt holders are used for transport.

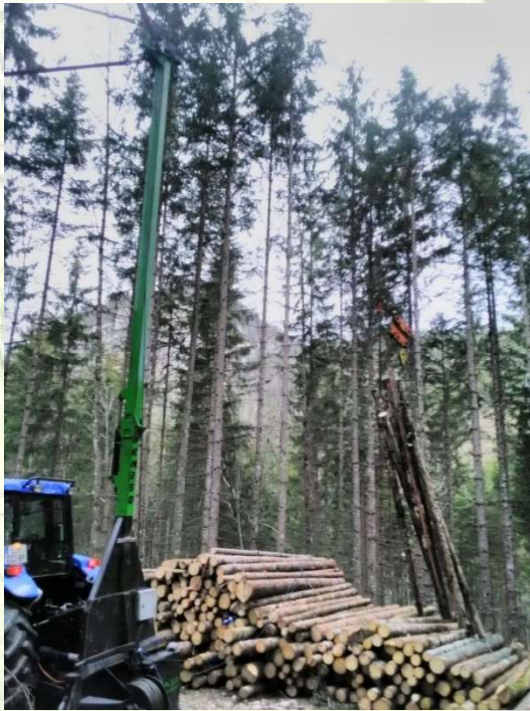
Depending on the requirements, the systems are for:

Uphill operation

Downhill operation

Or can be used **horizontally**.

PKM 250 Thinning rope crane



Weight	950 kg
Range max.	250 m
Tensile force pull line	2 kN top rope layer
Traction force main line carrying rope	6 kN in the clamping compartment
pull rope	14 / 16 mm HV
Mast height	8 mm HV
Power supply	7,8 m
	12 V / 24 V

Short-distance cable crane for three-point attachment

The PKM 250 is the ideal machine for fast

Rope crane operations with ranges of up to 250 m.

With a pulling force of 2 tons. on the top rope layer Is the system ready for any use?

Radio control with route and saddle automatic as well

This is rounded off by coupling options for all trolleys system.

Proportional braking system with the easiest operation

Thanks to its low weight, assembly is also easy

small tractors from 40 kW possible.

PKM 350 Tilting mast



Weight	1150 kg
Range max.	350 m
Tensile force pull line	2,2 kN top rope layer
Traction force main line	6,5 kN in the clamping compartment
carrying rope	14 / 16 mm HV
pull rope	8 mm HV
Mast height	9 m
Power supply	12 V / 24 V

Short-distance cable crane for three-point attachment

The PKM 350 is the ideal machine for fast Rope crane operations with ranges of up to 350 m. With a pulling force of 2.2 tons. on the top rope layer Is the system ready for any use?.

Radio control with automatic route and saddle control complete this system off.

Proportional braking system with the easiest operation

Thanks to its low weight, assembly is also easy
small tractors from 65 kW possible.

Bracing is done with 3 x 10 ton tension straps

Can be coupled with all common trolleys. Remote maintenance capable

Industry 4.0

PKM 350/3 3 Rope tilting mast



Weight	1250 kg
Range max.	350 m uphill / 160 downhill
Tensile force ZS	2,2 kN top rope layer
Traction force TS	6,5 kN in the clamping compartment
carrying rope	14 / 16 mm HV
pull rope	8 mm HV
Auxiliary rope	5 mm
Mast height	9 m

Short-distance cable crane for three-point attachment

The PKM 350/3 is the ideal machine for fast Rope crane operations with ranges of up to 350 m uphill - downhill - horizontal operation.

With a pulling force of 2.2 tons. on the top rope layer
Is the system ready for any use?.

Radio control with automatic route and saddle control complete this system off.

Proportional braking system with the easiest operation

Thanks to its low weight, assembly is also easy

small tractors from 65 kW possible.

Bracing is done with 3 x 10 ton tension straps

Can be coupled with all common trolleys. Remote maintenance capable

Industry 4.0

Rope crane accessories

Cultivated mast MW6



Attachment mast suitable for all common ones Winds.
Mast height 6.5 m – hydraulic Service.
Instantly turns any winch into one Tilting mast

Carrying winch 6000



Hydraulic suspension cable winch with storage and tension compartment.
Tensile force 6.5 tons at 180 bar.
Rope capacity 480m 16mm rope

Carrying winch 2500



Hydraulic suspension cable winch suitable for Savall or Maxwald systems
Hydraulic operation
Tensile force max. 2.5 ton.

Rope crane automation

Automation

Originally developed out of necessity, our automation systems have been on the market since 2009.

To date, over 400 Xs have been assembled and in use worldwide.

The manufacturer-independent system is used on all types of cable cranes.

Whether 2 rope or 3 rope system, hydrostatic drive, or mechanical control through to electric and hybrid systems.

All systems meet the requirements of EN 17067:2018

Some advantages:

Control of up to 6 hydrostatic pumps

Automatic saddle

moving loading location

Automatic brake control independent of the winch with adjustable times

Automatic gas adjustment in several modes

Depending on the radio system, operation is continuously variable or with 4 preset speeds in each direction.

Display and setting via 4/7" touch display.

Radio carriage connection from all manufacturers

Complex self-monitoring of the entire system - e.g. sensor errors, slack rope or overload.

Connection of the complete machine control (oil levels, temperatures, engine control) possible Remote maintenance and Industry 4.0



Remote systeme

Depending on the application, different radio systems are available:



ZEUS

Operation of the winches is infinitely variable.

Range of this system max.450 m



WAVE

Operation is via 6 buttons.

Speeds for extending 4 times and retracting 4 times can be set on the touch display.

Range of this version with directional antenna approx. 750 m

Extensions

Using various coupling boards and control modules, we can convert existing systems that are only joystick controlled (e.g. long-distance railways) to radio. The original system remains and is only expanded to include a radio control.

Accessories

From proportional pump controls to brake valves, gas actuators and slack cable monitoring, we always have a wide range of products in stock

This means we have the right solution for all systems.

Our systems are used on Koller cable cranes, Valentini systems, MM peregrine falcons and kestrels, as well as TST and eagles. Some customers' self-built systems have already been successfully automated.

Auxiliary winch

PRW 300



Developed and introduced in 2009 and used several hundred times.

Our circulating cable winch is characterized by its simple assembly, the easy-to-use system and the enormous pulling power.

Standard with integrated radio connection, which can be linked to ANY radio system.

No changes need to be made for operation and use and the already installed radio can continue to be used.

Operation in 12 / 24 V

Hydraulic requirement from 40 l/min

Tensile force max. 1000kg

Rope speed up to 6 m/min

Rope capacity up to 500m 3mm rope



Accessories - electronics - radio

Switch Box



Our self-developed control electronics make it possible to automatically control auxiliary and retrieval winches via the existing radio.

Cable guides



Radio controls



Radio controls for simple as well

Double drum winches.

Hydraulic winch conversions

On radio.

Various assembly systems and cable guides are available.

It is also possible to equip the winches with complete automatic operation.

Special structures

Crane tilt

Crane tilt conversion kit



Completely finished unit, suitable for Valmet-Komatsu, John Deere, Rottne etc.

Pressure force 24 tons

Tilt +5° -24°

Milled hole pattern and compact unit – no change in the transport height of the machine.

Telescopic stanchions

Increase loading capacity by up to 70%



Operation completely automatically from the cab

Crane cabins

We have been building crane cabins for all requirements for 26 years now

A wide variety of equipment variants are available.

Integrated electronics

Suitable for electronic and hydraulic control blocks

Glazed with polycarbonate safety glass

Mechanical or air-suspended comfort seat

Auxiliary heaters and air conditioning possible

Version with doors on the left, right or front – straight or curved versions



Likewise operating cabins for long-distance railways or special solutions

